

DEMO-UNIVERSITY AUDIT

Tekijät

Auditointivuosi **2021**, Karvin julkaisu

Kieli **Englanti**

ISBN

1.1 The planning of education

- Korkeakoulun itsearviointi

[karvi](#)



*Please briefly **describe** the procedures used by your HEI to plan education. **Assess** the functioning of these procedures.*



[auditointikäsikirja](#)

Use the following sub-questions in the self-assessment, as applicable:

- How does the HEI ensure that the educational provision is linked to the strategy?
- How has the HEI ensured that the degree programmes correspond with the appropriate level in the National Framework for Qualifications and Other Competence Modules?
- How is the relevance to working life taken into account in the planning of education?
- How is internationalisation taken into account in the planning of education?
- How are the continuous learning needs taken into account in the planning of education?
- How is it ensured in the planning of education that the teaching methods, assessment methods and learning environments support the achievement of learning outcomes?
- How are research, development and innovation activities and/or artistic activities integrated in the teaching? How does the HEI ensure that the research knowledge is linked to education? How are staff members encouraged to strengthen the connection between education and research, development and innovation activities and/or artistic activities?
- How is the workload of students measured and monitored?
- How can students and external stakeholders participate in the planning of education?
- How are the plans of degree programmes and other study entities approved?

Summarise the main strengths and enhancement areas related to the planning of education in the table below.

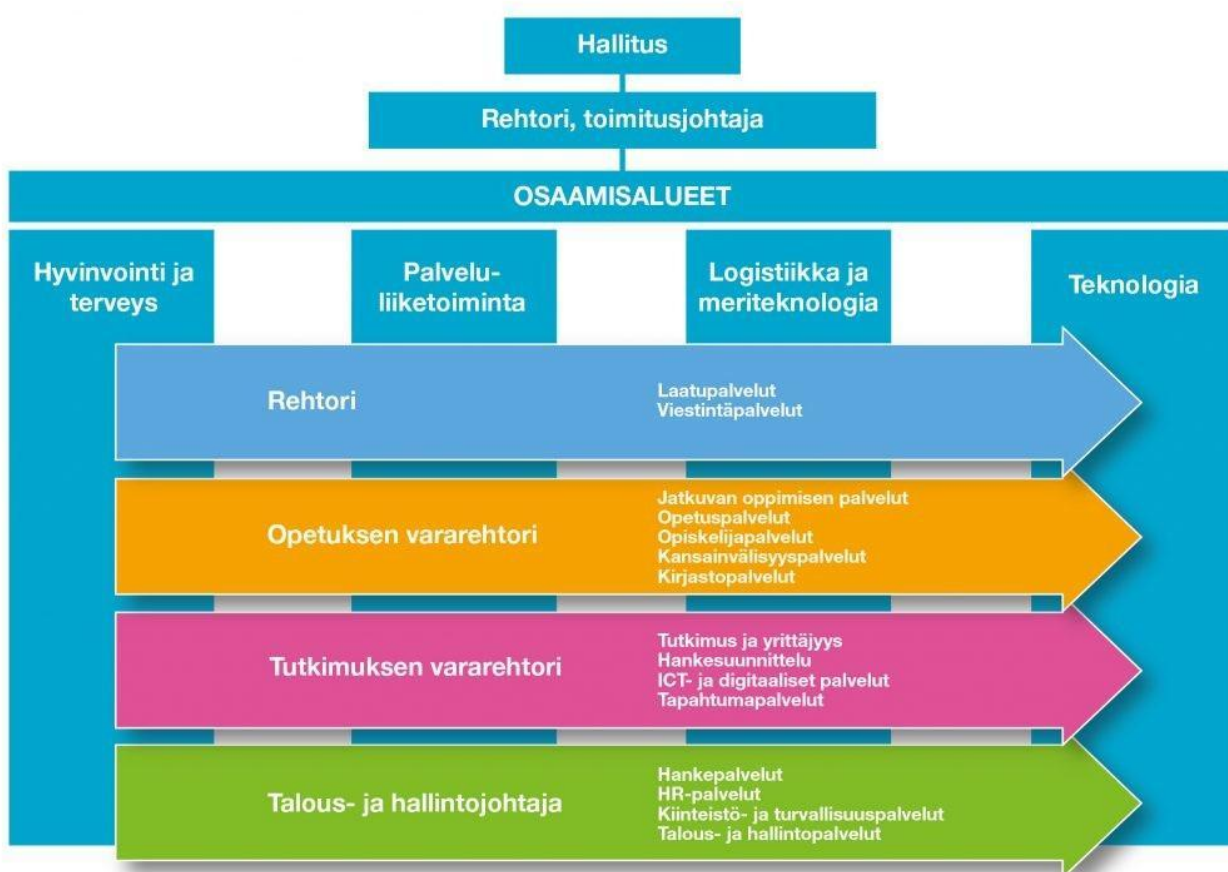
Strengths Enhancement areas

| | |
|----|----|
| XX | XX |
| XX | XX |
| XX | XX |

1.1 The planning of education

- Auditointiryhmän arvio

Kuvio 6. TEPPO-järjestelmä



Assess the functioning the procedures used by the HEI to plan education. Focus on the strengths, good practices and enhancement areas in the assessment.

Use the following sub-questions in your assessment, as applicable:

- How does the HEI ensure that the educational provision is linked to the strategy?
- How has the HEI ensured that the degree programmes correspond with the appropriate level in the National Framework for Qualifications and Other Competence Modules?
- How is the relevance to working life taken into account in the planning of education?
- How is internationalisation taken into account in the planning of education?
- How are the continuous learning needs taken into account in the planning of education?
- How is it ensured in the planning of education that the teaching methods, assessment

methods and learning environments support the achievement of learning outcomes?

- How are research, development and innovation activities and/or artistic activities integrated in the teaching? How does the HEI ensure that the research knowledge is linked to education? How are staff members encouraged to strengthen the connection between education and research, development and innovation activities and/or artistic activities?
- How is the workload of students measured and monitored?
- How can students and external stakeholders participate in the planning of education?
- How are the plans of degree programmes and other study entities approved?