

AUDIT OF THE UNIVERSITY OF EASTERN FINLAND

Tekijät **Eva Åkesson, Marc Perkins, Jürgen Seifried, Anni Siltanen, Mira Huusko and Hanna Väättäin.** Self-assessment of the University of Eastern Finland (eds.) **Saila Vaittinen, Anu Arosanervo, Soili Makkonen and Maija Lahtela-Kakkonen**

Auditointivuosi **2023**, Karvin julkaisu **7:2023**

Kieli **Englanti**

ISBN **978-952-206-789-0 pdf**

The organisation and strategy of the HEI

- Korkeakoulun itsearviointi

A multidisciplinary university

The University of Eastern Finland is one of the most multidisciplinary universities in Finland. The University has systematically built its strategy towards more multidisciplinary and interdisciplinary research and education, and through them, impact. Research and education respond to global challenges and build a sustainable future.

The university offers bachelor's, master's and doctoral degrees in 13 fields of study. UEF has also been given degree awarding authority in the field of engineering, and bachelor of engineering, master of engineering, and doctor of engineering training will start on 1 August 2023.

UEF has campuses in Joensuu and Kuopio. Two of the university's four faculties are located on both campuses. The university has a Language Centre, Library, and a Centre for Continuous Learning (CCL), as well as a pharmacy. University services are organised as a single service provision, regardless of whether people work in faculty-specific services or in centralised services.

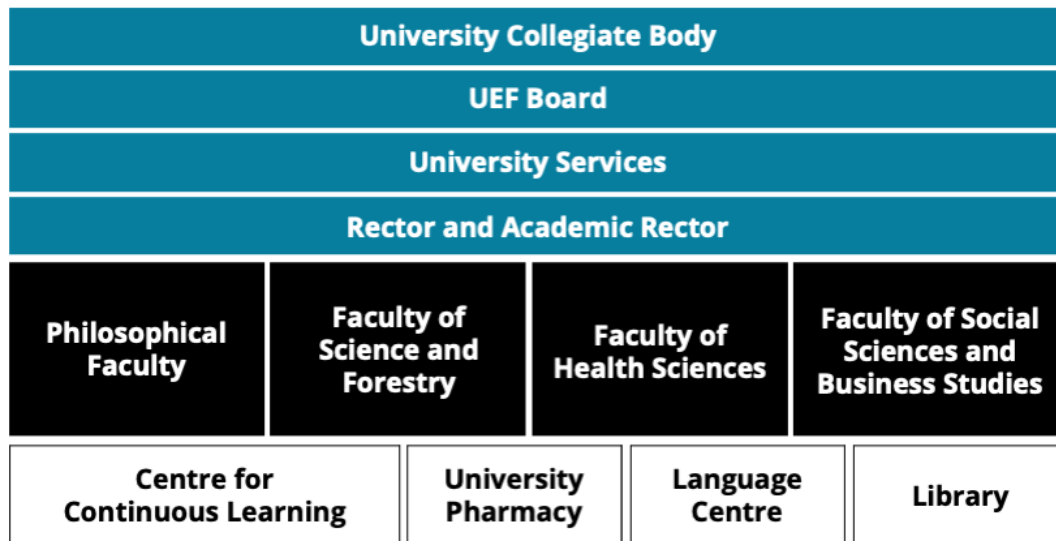


Figure 1 UEF's Organisation

UEF is one of the largest providers of open university education in Finland.

[UEF 2030 Strategy](#) - Seizing a Sustainable Future is rooted in global challenges to which we seek solutions in our profile areas through interdisciplinary research and education. The profiles areas are 1) Ageing, lifestyles and health 2) Cultural encounters, mobilities and borders 3) Diversifying learning and interaction and 4) Environmental change and sustainable use of natural resources.

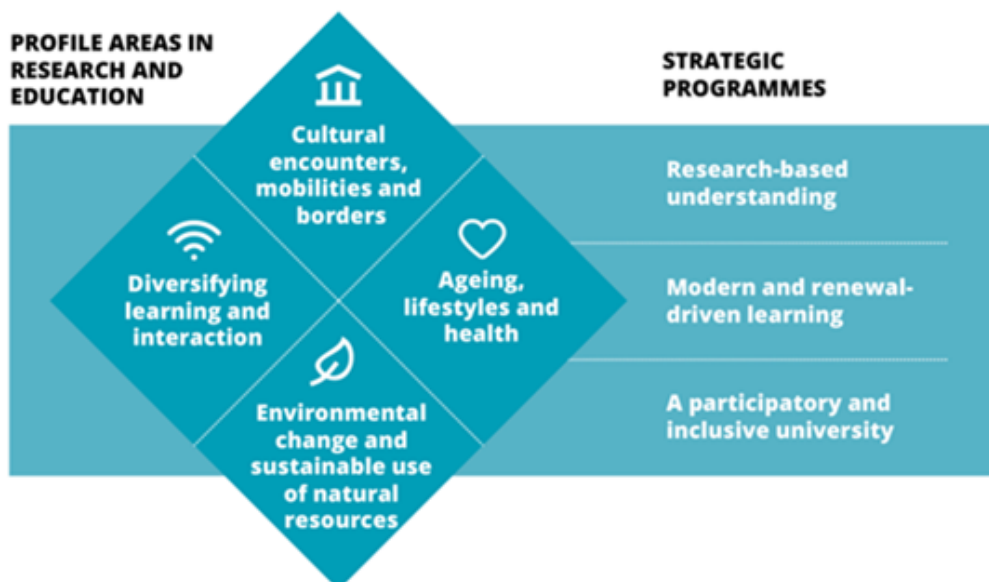


Figure 2 UEF Strategy 2030

Programme 1. [Research-based understanding](#)

- 1) World-class science – a high standard of interdisciplinary research
- 2) Science for all – a pioneer of open science and science communication
- 3) Part of regional and global development – a key agent of interaction in ecosystems

Programme 2. Modern and renewal-driven learning

- 1) A learner-centred university – student-centred and networked learning environments
- 2) Continuous learning – education that anticipates societal needs
- 3) International expertise – stronger mobility and educational immigration

Programme 3. A participatory and inclusive university

- 1) Strong sense of community – an academic community characterised by well-being
- 2) Renewal-driven expertise – motivated staff and recognised strengths
- 3) Open interaction and smooth service

The implementation of strategic programmes is supported by strategic funding at the university level.

Part of the funding has been agreed for the performance contract period (support for research communities, doctoral training, implementation of online and multi-modal pedagogy). This will strengthen interdisciplinary research and pedagogical development in education, among other things, over the long term. The strategic programmes are updated annually.

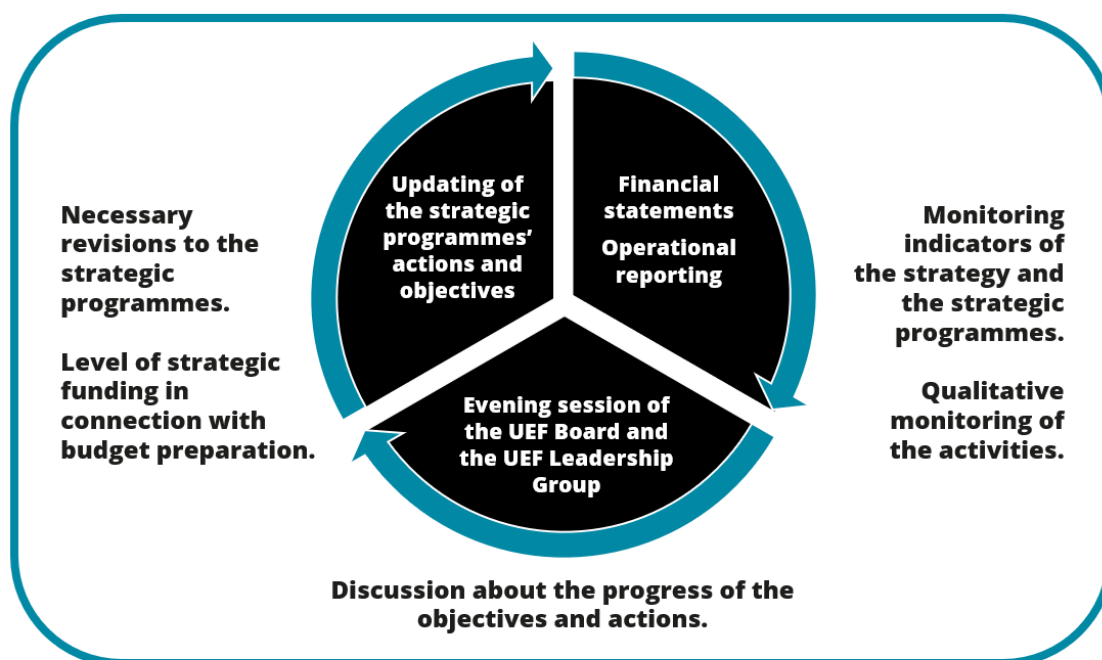


Figure 3 Monitoring of strategic programmes

In line with the principles of continuous quality development, the university participates in regular evaluation processes:



Figure 4 UEF's Quality labels